

SCOTTS PLACE OFFICES

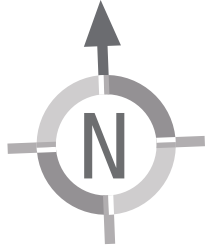
BROMLEY, KENT

Commercial space available - 5 modern office units between 142sqm and 157sqm
with associated parking and landscaping, in a central location in town.

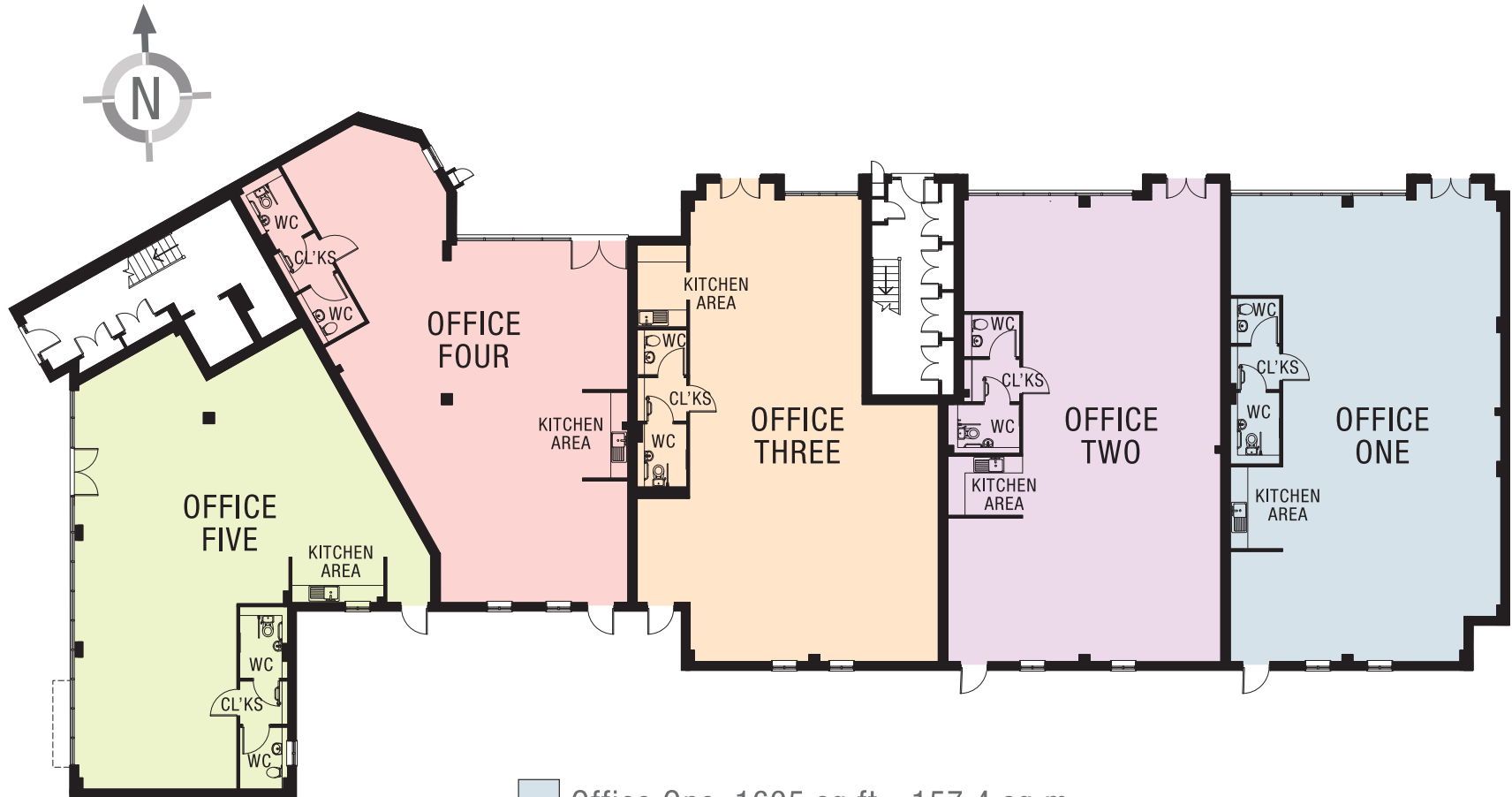


www.seliving.co.uk

SCOTTS PLACE GROUND FLOOR OFFICES - DEVELOPMENT LAYOUT



SCOTTS PLACE OFFICES - GROUND FLOOR LAYOUTS



- Office One: 1695 sq ft - 157.4 sq m
- Office Two: 1685 sq ft - 156.7 sq m
- Office Three: 1615 sq ft - 150.0 sq m
- Office Four: 1530 sq ft - 142.2 sq m
- Office Five: 1575 sq ft - 146.5 sq m